

BAITU CRYOGENIC VALVE

Cryogenic Transportation &
Storage Equipment/
LNG Filling Station



Cryogenic Valve Solutions
Worth Your Trust



Shanghai Baitu
Cryogenic Valve.Co.,Ltd.

www.baituvalves.com





LNG Fueling Products

Fueling Nozzle	DCJ-25~DCJ-25B	255

Venting Nozzle	DHJ-10~DHJ-10D	256
	DHJ-10A~DHJ-10A4	257
	DHJ-10E	258
	DHJ-10F~DHJ-10G	259
	DHJ-10F1~DHJ-10G1	260

Filling Device	DJC-40~DJC-40C	261
	DXK-40	262
	DCK-40	263

Breakaway Coupling	LDQ-15~LDQ-25A3	264
	LDQ-25A~LDQ-25A2	265
	LDQ-25B1	266
	LDQ-25B~LDQ-25B2	267
	LDQ-50	268

Charging Excess Device	DXC-20K	272
	DJK-50	273
Cryogenic Fueling Receptacle	DJK-65~DJK-65A	274
	DCJ-50	275
LNG Fueling Nozzle	DCJ-65~DCJ-65A	276
Vacuum Valve	ZGF-04C	277

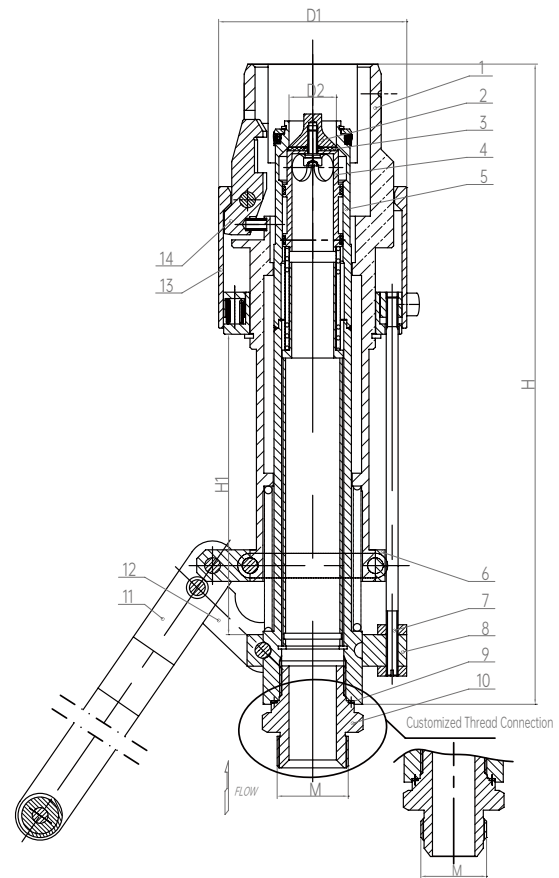
Fueling Nozzle

Parameters

PN: 4.0MPa
DN: Ø25
Design Temp.: -196°C ~+85°C
Media: LNG, LO₂, LN₂, LAr, CO₂



This kind of product has certified by EAC
Standards: TR CU 032/2013



Materials

1	Outer	3A21	6	Fixed Block A	7075 (T6)	11	Handwheel Support	S30408
2	Top Cover	S30408	7	Pull Bar	S30408	12	Connecting Plate	S30408
3	Gasket	PCTFE	8	Fixes Block B	3A21	13	Casing Pipe C	S30408
4	Disc	3A21	9	Gasket	D#9000	14	Claw	S30408
5	Refueling Pipe	S30408	10	Thread Connector	S30408			

Model No.	Specifications & Dimensions (mm)					Weight(kg)
	D1	D2	M	H	H1	
DCJ-25	Ø95	Ø24	M36x2	332	152	7
DCJ-25A	Ø95	Ø24	1-5/16	332	152	7
DCJ-25B	Ø95	Ø24	M30x1.5	332	152	7



Venting Nozzle

Parameters

PN: 4.0MPa

Design Temp.: -196°C ~+80°C

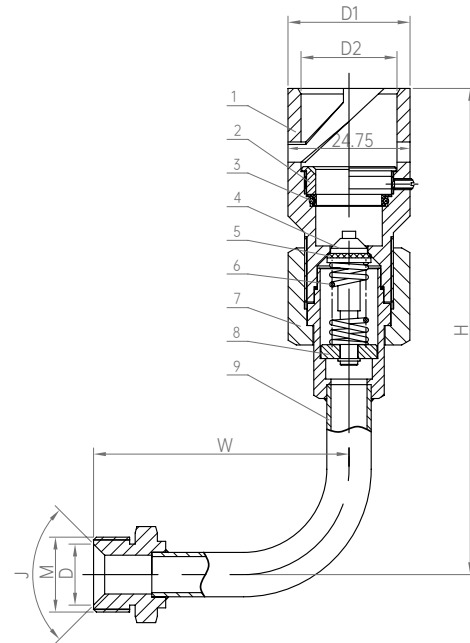
Media: LNG, LO₂, LN₂, LAr, CO₂



Venting nozzle is a charging component mainly used on vehicle mounted cylinder.

This kind of product has certified by EAC

Standards: TR CU 032/2013



Materials

1	Union Connecting Pipe	S30408	4	Disc	S30408	7	Connecting Nut	HPb59-1
2	Gland Nut	S30210	5	Gasket	S30408	8	Spring Seat	S30408
3	O Ring	NBR	6	Spring	S30210	9	Connecting Pipe Assembly	S30408

Model No.	Specifications & Dimensions (mm)							Weight(kg)
	H	A	L	B	M	D0	D1	
DHJ-10	Ø44	Ø34.8	M22×1.5	92	175	Ø18	90°	1.0
DHJ-10B	Ø44	Ø34.8	M27×2	92	175	Ø22	90°	1.0
DHJ-10C	Ø44	Ø34.8	M22×1.5	92	335	Ø18	90°	1.0
DHJ-10D	Ø44	Ø34.8	M27×2	92	335	Ø22	90°	1.0

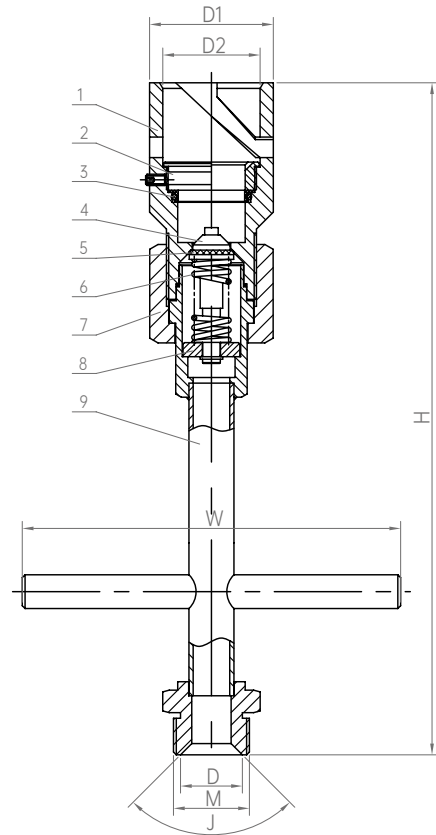
Venting Nozzle

Parameters

PN: 4.0MPa
DN: Ø10
Design Temp.: -196°C ~+80°C
Media: LNG, LO₂, LN₂, LAr, CO₂



This kind of product has certified by EAC
Standards: TR CU 032/2013



Materials

1	Union Connecting Pipe	S30408	4	Disc	S30408	7	Connecting Nut	HPb59-1
2	Gland Nut	S30210	5	Gasket	S30408	8	Spring Seat	S30408
3	O Ring	NBR	6	Spring	S30210	9	Connecting Pipe Assembly	S30408

Model No.	Specifications & Dimensions (mm)							Weight(kg)
	H	A	L	B	M	D0	D1	
DHJ-10A	Ø44	Ø34.8	M27×2	178	298	Ø22	90°	1.0
DHJ-10A1	Ø44	Ø34.8	M22×1.5	178	298	Ø18	90°	1.0
DHJ-10A3	Ø44	Ø34.8	M22×1.5	216	446	Ø18	90°	1.0
DHJ-10A4	Ø44	Ø34.8	M22×1.5	238	293	Ø18	90°	1.0



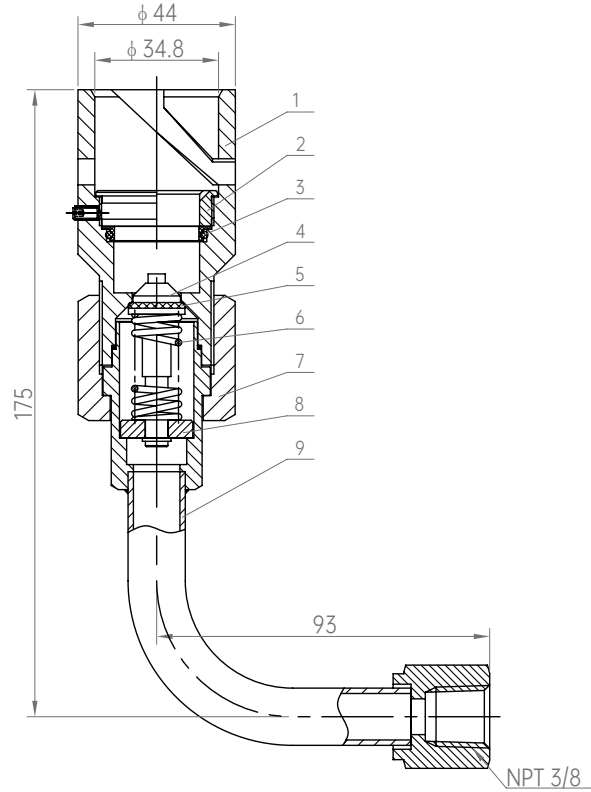
Venting Nozzle

Parameters

PN: 4.0MPa
DN: Ø10
Design Temp.: -196°C ~+80°C
Media: LNG, LO₂, LN₂, LAr, CO₂



This kind of product has certified by EAC
Standards: TR CU 032/2013



Model No.: DHJ-10E

Materials

1	Union Connecting Pipe	S30408	4	Disc	S30408	7	Connecting Nut	HPb59-1
2	Gland Nut	S30210	5	Gasket	S30408	8	Spring Seat	S30408
3	O Ring	NBR	6	Spring	S30210	9	Connecting Pipe Assembly	S30408

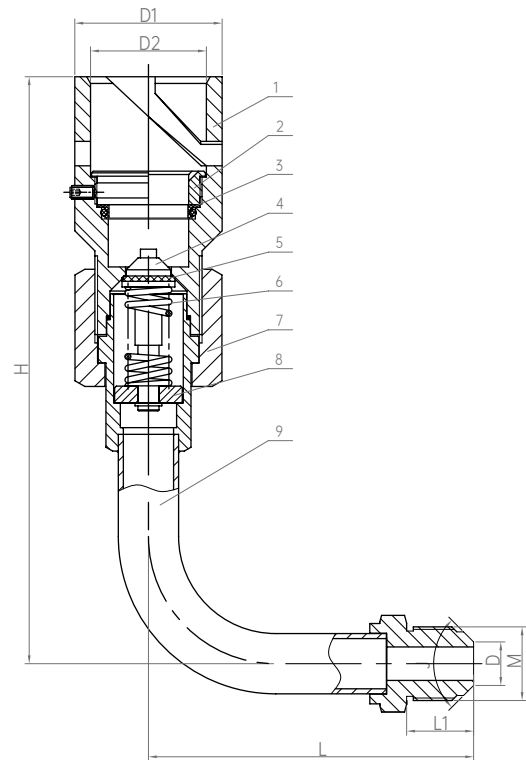
Venting Nozzle

Parameters

PN: 4.0MPa
DN: Ø10
Design Temp.: -196°C ~+80°C
Media: LNG, LO₂, LN₂, LAr, CO₂



This kind of product has certified by EAC
Standards: TR CU 032/2013



Materials

1	Union Connecting Pipe	S30408	4	Disc	S30408	7	Connecting Nut	HPb59-1
2	Gland Nut	S30210	5	Gasket	S30408	8	Spring Seat	S30408
3	O Ring	NBR	6	Spring	S30210	9	Connecting Pipe Assembly	S30408

Model No.	Specifications & Dimensions (mm)								Weight(kg)
	D1	D2	M	L	L1	H	D	J	
DHJ-10F	Ø44	Ø34.8	M22×1.5	97	20	175	Ø13	90°	
DHJ-10G	Ø44	Ø34.8	7/8-14UNF	103	25	175	Ø13	74°	



Venting Nozzle

Parameters

PN: 4.0MPa

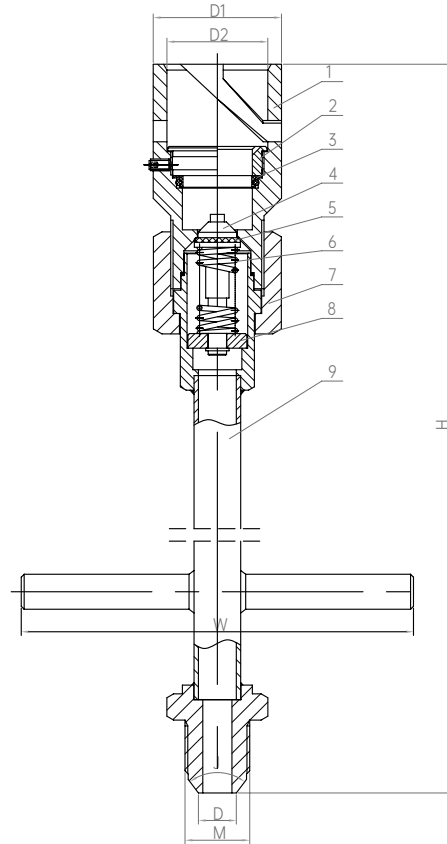
DN: Ø10

Design Temp.: -196°C ~+80°C

Media: LNG, LO₂, LN₂, LAr, CO₂



This kind of product has certified by EAC
Standards: TR CU 032/2013



Materials

1 Union Connecting Pipe	S30408	4 Disc	S30408	7 Connecting Nut	HPb59-1
2 Gland Nut	S30210	5 Gasket	S30408	8 Spring Seat	S30408
3 O Ring	NBR	6 Spring	S30210	9 Connecting Pipe Assembly	S30408

Model No.	Specifications & Dimensions (mm)							Weight(kg)
	D1	D2	M	W	H	D	J	
DHJ-10F1	Ø44	Ø34.8	M22×1.5	178	303	Ø13	90°	
DHJ-10G1	Ø44	Ø34.8	7/8-14UNF	178	303	Ø13	74°	

Fill Assembly

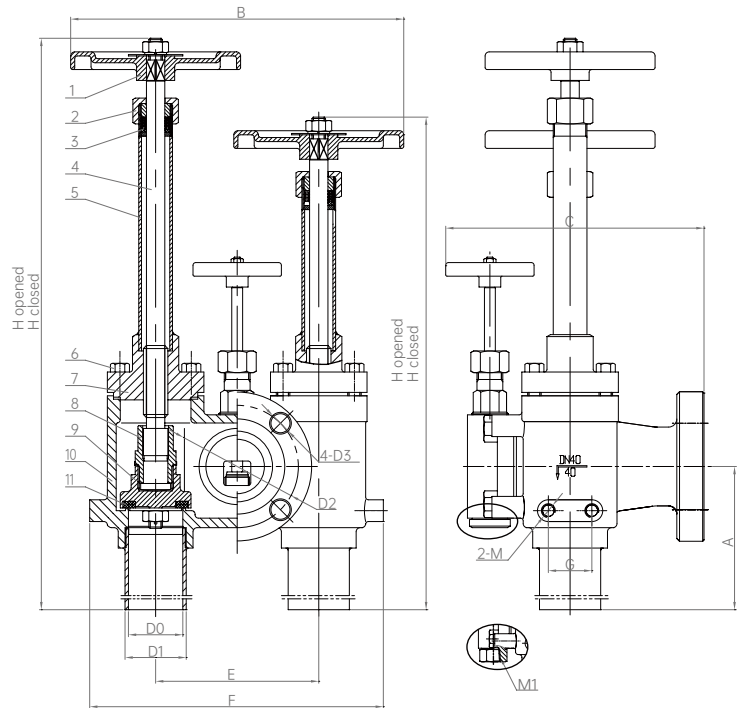
Parameters

PN: 4.0MPa
DN: Ø40
Design Temp.: -196°C ~+80°C
Media: LNG, LO₂, LN₂, LAr, CO₂

Connection : Butt Weld



Standards: EN13648:2008, TR CU 032/2013



Materials

1	Hand Wheel	Y102	5	Connecting Pipe	S30408	9	Disc	S30408
2	Gland Nut	S30408	6	Screw	S30408	10	Body	CF8
3	Washer	PTFE	7	Bonnet	CF8	11	Gasket	PCTFE
4	Stem	30408	8	Connecting Nut	S30408			

Model No.	Specifications & Dimensions (mm)															Weight(kg)	
	H Opening	H Closing	H1 Opening	H1 Closing	A	B	C	D0	D1	D2	D3	M	M1	E	F		G
DJC-40	475	455	416	397	140	245	190	40	45.5	90	14	M10	--	12	216	32	11.0
DJC-40B	475	455	416	397	140	245	190	42.76	48.3	90	14	M10	--	12	216	32	11.0
DJC-40C	475	455	416	397	140	245	190	40	45.5	90	14	M10	NPT1/4	12	216	32	11.0



Charging Joint

Parameters

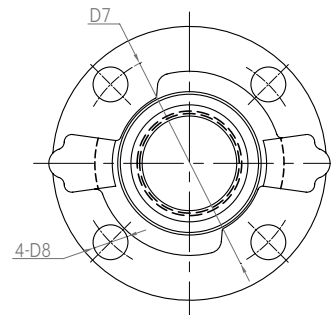
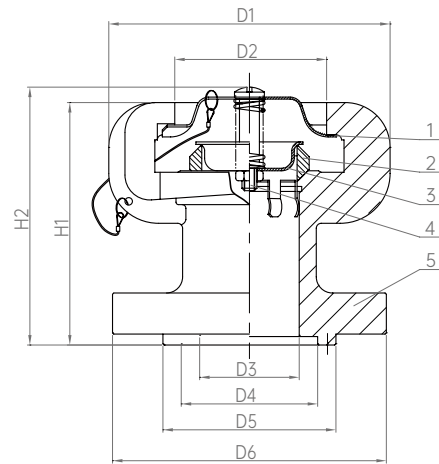
PN: 4.0MPa

DN: Ø40

Design Temp.: -196°C ~+80°C

Media: LNG, LO₂, LN₂, LAr, CO₂

Connection : Flange Connection



Standards: GB/T 24925, TR CU 032/2013

Materials

1	Positioning Plate	S30408
2	Sealing Ring	T3
3	Dust Cover	S30408
4	Screw	30408
5	Body of Charging Joint	CF8

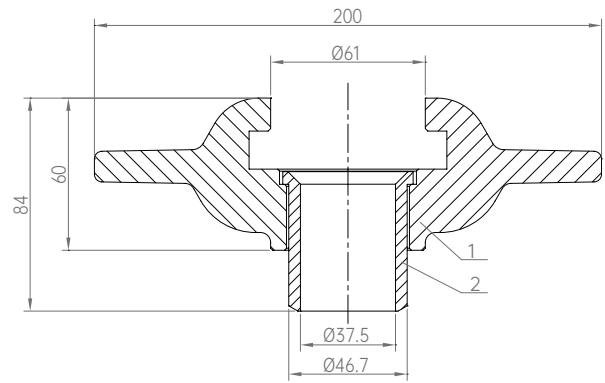
Model No.	Specifications & Dimensions (mm)										Weight(kg)
	D1	D2	D3	D4	D5	D6	D7	D8	H1	H2	
DXK-40	113	62	40	54.8	69.5	110	90	14	97	104	

Quick Joint

Parameters

PN: 4.0MPa
DN: Ø40
Design Temp.: -196°C ~+80°C
Media: LNG, LO₂, LN₂, LAr, CO₂

Connection :
Butt Weld



Model No.: DCK-40



Standards: GB/T 24925, TR CU 032/2013

Materials

1	Pipe of Connector	S30408
2	Receptacle of Connector	CF8



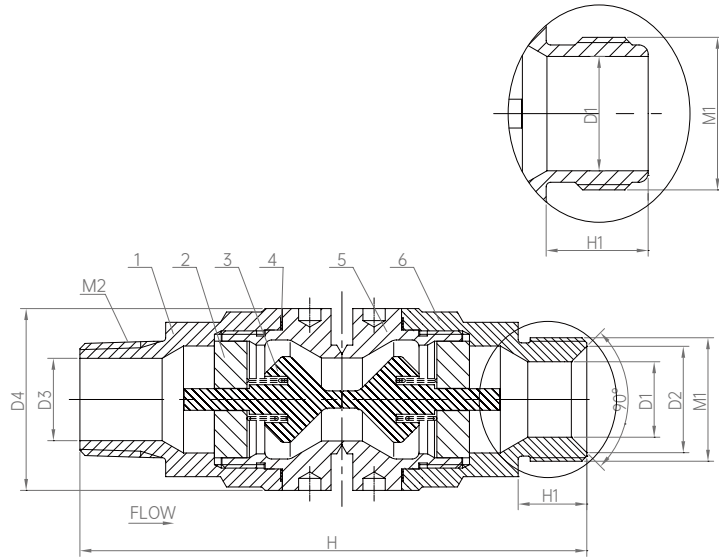
Breakaway Coupling

Parameters

PN: 4.0MPa
DN: Ø15 ~ Ø25
Design Temp.: -196°C ~ +80°C
Media: LNG, LO₂, LN₂, LAr, CO₂

Connection :

Thread Connection



Materials

1	Connector A	S30408	3	Valve Trim	HPb59-1	5	Body	S30408
2	Spring Seat	HPb59-1	4	Washer	Modified PTFE	6	Connector B	S30408

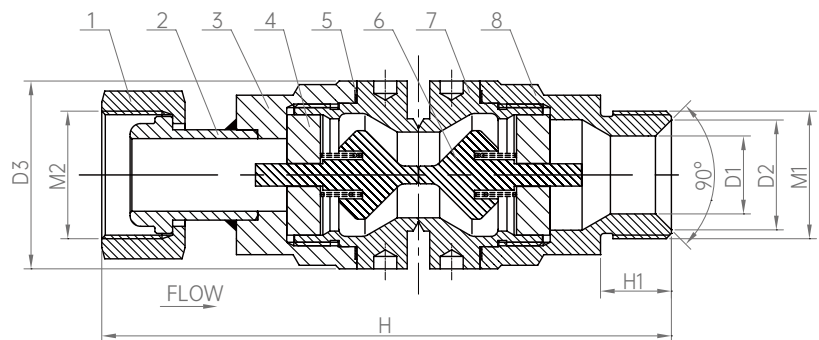
Model No.	Specifications & Dimensions (mm)								Weight(kg)
	L	L1	D1	D2	D3	D4	M1	M2	
LDQ-15	144	20	15	23	16	53	M27x2	NPT 3/4	
LDQ-15A	140	20	15	23	14	53	M27x2	NPT 1/2	
LDQ-25	148	20	22	31	24	53	M36x2	NPT 1	
LDQ-25A3	150	22.5	24	--	24	53	1 5/16-12UN	NPT 1	

Breakaway Coupling

Parameters

PN: 4.0MPa
DN: Ø25
Design Temp.: -196°C ~+80°C
Media: LNG, LO₂, LN₂, LAr, CO₂

Connection :
Thread Connection



Materials

1 Hexagon Nut	HPb59-1	4 Spring Seat	HPb59-1	7 Body	S30408
2 Connecting Pipe	S30408	5 Washer	Modified PTFE	8 Connector B	S30408
3 Connector A	S30408	6 Valve Trim	HPb59-1		

Model No.	Specifications & Dimensions (mm)							Weight(kg)
	L	L1	D1	D2	D3	M1	M2	
LDQ-25A	161	20	22	31	53	M36x2	M36x2	
LDQ-25A2	161	20	22	31	53	M36x1.5	M36x1.5	

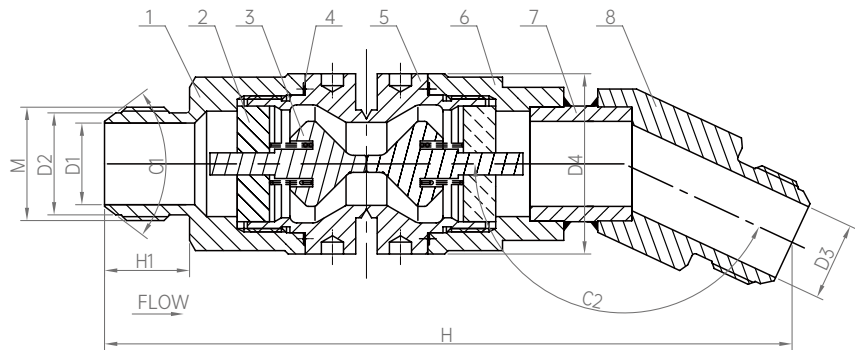


Breakaway Coupling

Parameters

PN: 4.0MPa
DN: Ø25
Design Temp.: -196°C ~+80°C
Media: LNG, LO₂, LN₂, LAr, CO₂

Connection :
Thread Connection



Materials

1	Connector A	S30408	4	Washer	Modified PTFE	7	Connecting Pipe	S30408
2	Spring Seat	HPb59-1	5	Body	S30408	8	Connector C	S30408
3	Valve Trim	HPb59-1	6	Connector B	S30408			

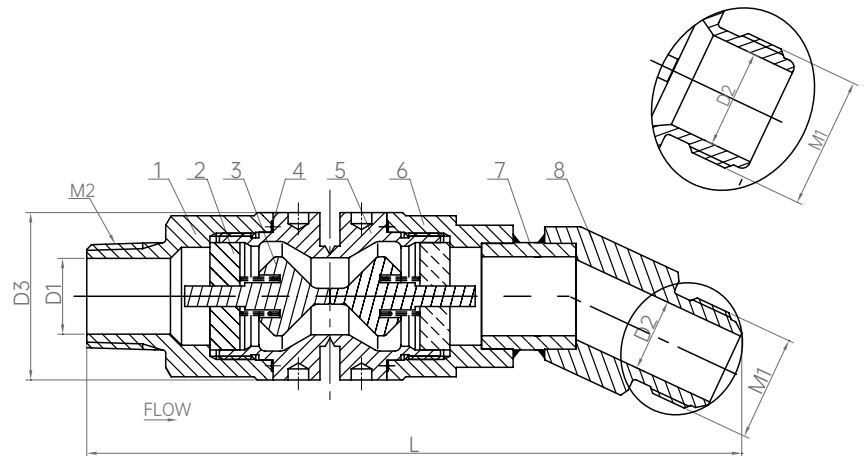
Model No.	Specifications & Dimensions (mm)								Weight(kg)
	H	H1	H2	H3	L1	L2	L3	M	
LDQ-25B1	74°	155°	202	24	30	23	53	1.5/16-12UN	

Breakaway Coupling

Parameters

PN: 4.0MPa
DN: Ø25
Design Temp.: -196°C ~+80°C
Media: LNG, LO₂, LN₂, LAr, CO₂

Connection :
Thread Connection



Materials

1	Connector A	S30408	5	Body	S30408
2	Spring Seat	HPb59-1	6	Connector B	S30408
3	Valve Trim	HPb59-1	7	Connecting Pipe	S30408
4	Washer	Modified PTFE	8	Connector C	S30408

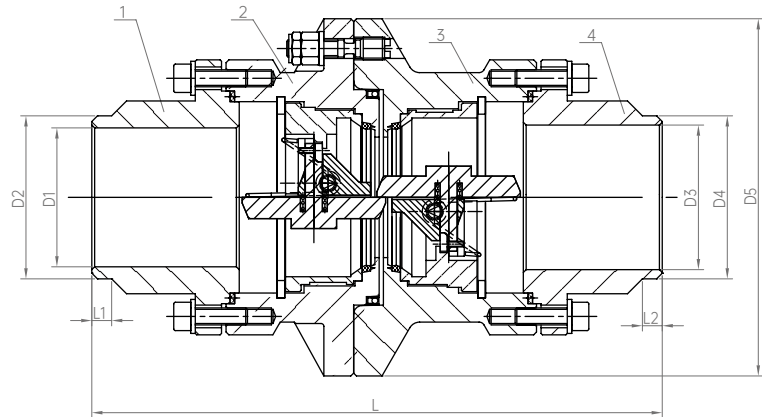
Model No.	Specifications & Dimensions (mm)							Weight(kg)
	C	L	D1	D2	D3	M1	M2	
LDQ-25B	155°	267	24	22	53	M36x2	NPT 1	
LDQ-25B2	155°	208	24	23	53	1 5/16-12UN	NPT 1	



Breakaway Coupling

Parameters

PN: 4.0MPa
 DN: Ø50
 Design Temp.: -196°C ~+80°C
 Media: LNG, LO₂, LN₂, LAr, CO₂
 Connection : Butt Weld



Materials

- | | | |
|---|-------------|--------|
| 1 | Connector A | S30408 |
| 2 | Body | S30408 |
| 3 | Bonnet | S30408 |
| 4 | Connector B | S30408 |

Model No.	Specifications & Dimensions (mm)								Weight(kg)
	L	L1	L2	D1	D2	D3	D4	D5	
LDQ-50	203	7	905	50	57.5	50	57.5	126	

Flame Arrester

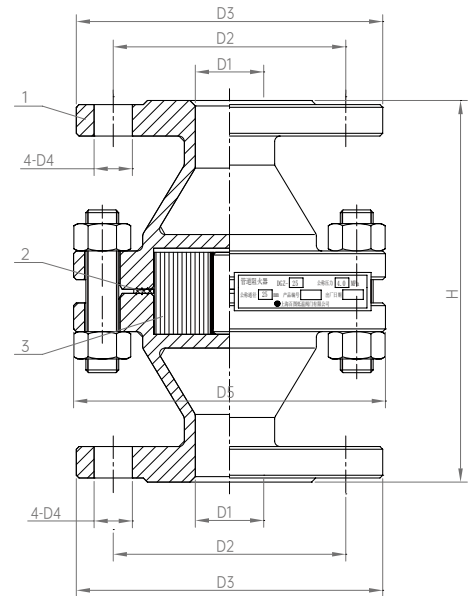
Parameters

Design Pressure: 4.0MPa
Working Pressure: 0.08MPa ~ 0.16MPa
DN: Ø25~Ø50
Design Temp.: -196°C ~+150°C
Media: LNG. CNG

Connection : Flange



Standards: GB/T 13347, TR CU 032/2013



Materials

1	shell	CF8
2	Gasket	PTFE
3	flame proof core	S30408

Model No.	Specifications & Dimensions (mm)						Weight(kg)
	D1	D2	D3	D4	D5	H	
DGZ-25	25	85	112	14	114	139	3.9
DGZ-40	40	110	148	18	142	171	5.2
DGZ-50	50	125	165	18	172	178.5	6.2



Flame Arrester

Parameters

Design Pressure: 4.0MPa

Working Pressure: 0.08MPa ~ 0.16MPa

DN: Ø25~Ø50

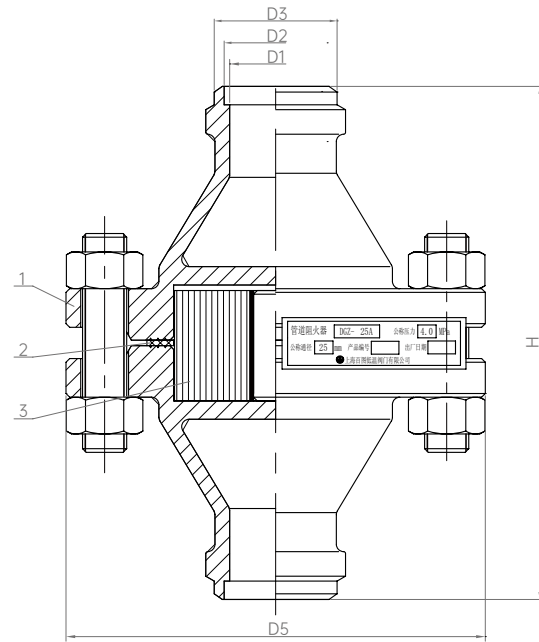
Design Temp.: -196°C ~ +150°C

Media: LNG, CNG

Connection : Butt Weld



Standards: GB/T133a47, TR CU 032/2013



Materials

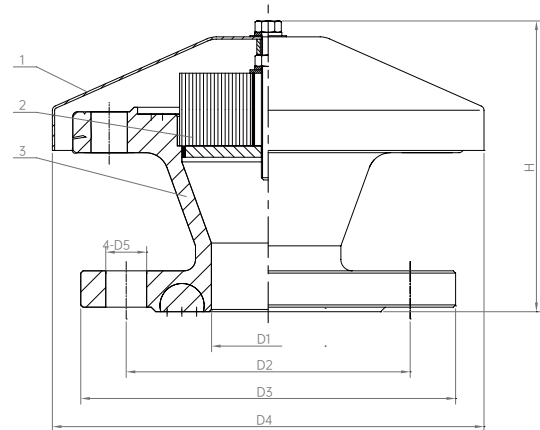
1	shell	CF8
2	Gasket	PTFE
3	flame proof core	S30408

Model No.	Specifications & Dimensions (mm)					Weight(kg)
	D1	D2	D3	D4	H	
DGZ-25A	25	27.9	33.4	Ø114	139	3.6
DGZ-40B	38	43	48.3	Ø142	159	
DGZ-50A	50	54.5	60.3	168	129.5	

Cap of Flame Arrester

Parameters

Design Pressure: 4.0MPa
 Working Pressure: 0.08MPa ~ 0.16MPa
 DN: Ø50
 Design Temp.: -196°C ~ +150°C
 Media: LNG. CNG
 Connection : Flange



Standards: GB/T 1334A7, TR CU 032/2013

Materials

1	Dust Cover	S30408
2	flame proof core	S30408
3	shell	CF8

Model No.	Specifications & Dimensions (mm)						Weight(kg)
	D1	D2	D3	D4	D5	H	
DGZ-50B	50	125	165	190	18	128	



Charging Excess Device

Parameters

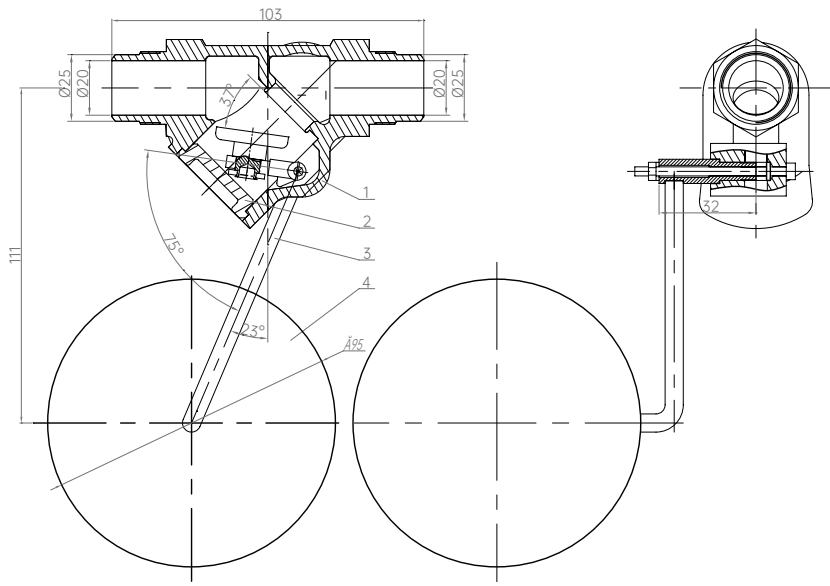
PN: 4.0MPa

DN: Ø20

Design Temp.: -196°C ~+80°C

Media: LO₂, LN₂, LAr

Connection : Butt Weld



Model No.: DXC-20K

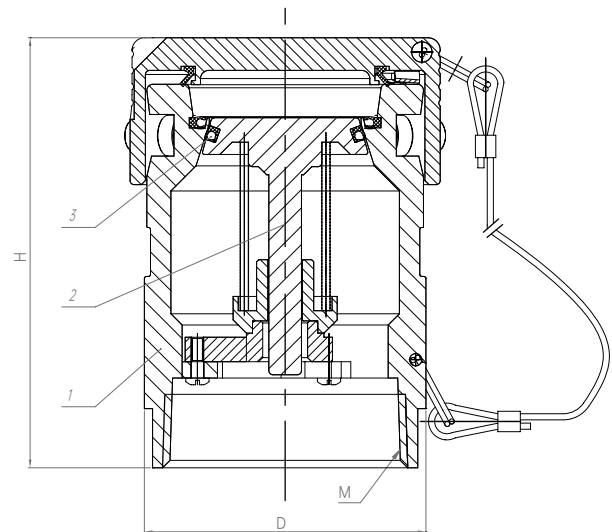
Materials

1	Body	S30408
2	Bonnet	S30408
3	Connecting bar	S30408
4	Floating Ball	S30408

Cryogenic Fueling Receptacle

Parameters

PN: 4.0MPa
DN: Ø50
Design Temp.: -196°C ~+85°C
Media: LNG, LN₂



This fuAeling receptacle is mainly used for ship LNG fueling application.
StandarAds: ISO 12617, TR CU 032/2013

Materials

1	Body	S30408
2	Disc	S30408
3	Ring	PTFE+S30408

Model No.	Specifications & Dimensions (mm)			Weight(kg)
	H	D	M	
DJK-50	105	Ø69	NPT 2	



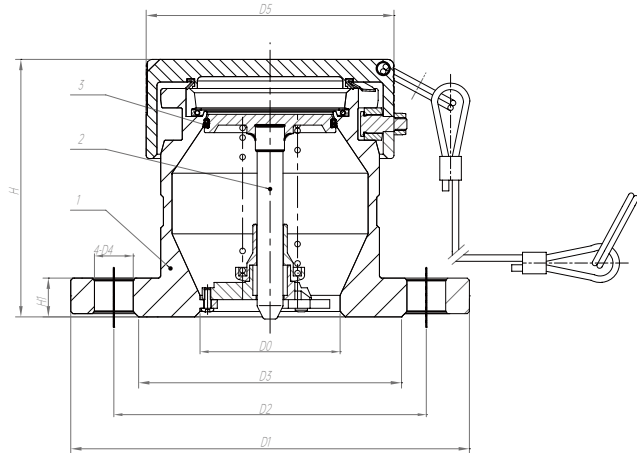
Cryogenic Fueling Receptacle

Parameters

PN: 4.0MPa
DN: Ø65
Design Temp.: -196°C ~+85°C
Media: LNG, LN₂



This fueling receptacle is mainly used for ship LNG fueling application.
Standards: ISO 12617, TR CU 032/2013



Materials

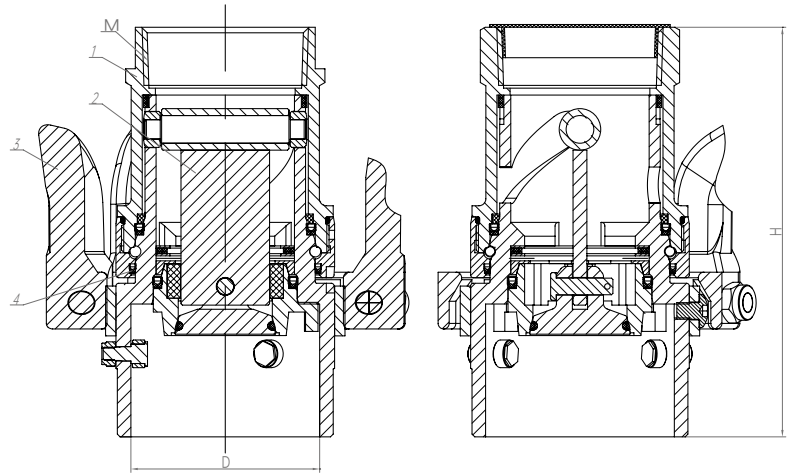
- | | | |
|---|------|-------------|
| 1 | Body | S30408 |
| 2 | Disc | S30408 |
| 3 | Ring | PTFE+S30408 |

Model No.	Specifications & Dimensions (mm)								Weight(kg)
	H	H1	D0	D1	D2	D3	D4	D5	
DJK-65	106	18	Ø65	Ø185	Ø145	Ø121	Ø18	Ø101.6	
DJK-65A	106	22	Ø65	Ø210	Ø170	Ø148	Ø18	Ø101.6	

LNG Fueling Nozzle

Parameters

PN: 4.0MPa
DN: Ø50
Design Temp.: -196°C ~+85°C
Media: LNG, LN₂



This fueling nozzle is suitable for ISO 12617 ship charging application
Standards: TR CU 032/2013

Materials

1	Connector	S30408
2	Connecting Plate	S30408
3	Handweel	S30408
4	Washer	PTFE+S30408

Model No.	Specifications & Dimensions (mm)			Weight(kg)
	H	D	M	
DCJ-50	148	Ø68.2	NPT 2	



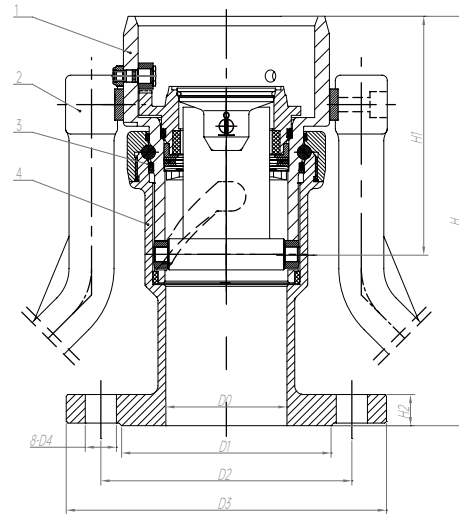
LNG Fueling Nozzle

Parameters

PN: 4.0MPa
DN: Ø65
Design Temp.: -196°C ~+85°C
Media: LNG, LN₂



This fueling nozzle is suitable for ISO 12617 ship charging application
Standards: TR CU 032/2013



Materials

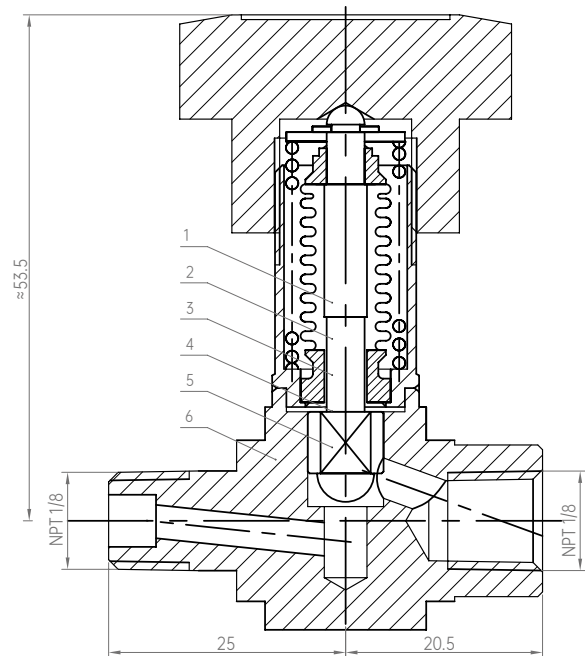
1	Body	S30408
2	Handweel	S30408
3	Washer	PTFE+S30408
4	Coat	S30408

Model No.	Specifications & Dimensions (mm)								Weight(kg)
	H	H1	H2	D0	D1	D2	D3	D4	
DCJ-65	236.5	138	18	Ø70	Ø121	Ø145	Ø185	Ø18	
DCJ-65A	236.5	138	22	Ø70	Ø148	Ø170	Ø210	Ø18	

Vacuum Valve

Parameters

PN: 4.0MPa
 DN: Ø4
 Design Temp.: -40°C ~+200°C
 Media: Air
 Sealing Performance (Helium Test) : $1 \times 10^{-9} / \text{Pa} \cdot \text{m}^3 / \text{S}$



This vacuum valve opens and closes between the vacuum isolation layer and vacuum pipe.
 Upper sealing adopts compact bellows structure with good sealing performance.
 This kind of product has certified by EAC and TS

Model No.: ZGF-04C

Materials

1	Body	S31603	4	Bellows	S31603
2	Stem	S31603	5	Spring	S30210
3	Bonnet	S31603	6	Hand Wheel	7009



Shanghai Baitu
Cryogenic Valve.Co.,Ltd.

Cryogenic Valve Solutions
Worth Your Trust



Add: Building 5, No.428, Changhong Road, Baoshan District, Shanghai, China

E-mail: sales@baituvalves.com

Website: www.baituvalves.com